

CHANGE DETECTION AND LAND USE / LAND COVER DATABASE UPDATING USING IMAGE SEGMENTATION, GIS ANALYSIS AND VISUAL INTERPRETATION

Jean-François Mas and Rafael González

Centro de Investigaciones en Geografía Ambiental (CIGA)
Universidad Nacional Autónoma de México (UNAM)
Antigua Carretera a Patzcuaro No. 8701
Col. Ex-Hacienda de San José de La Huerta
C.P. 58190 Morelia Michoacan MEXICO
jfm@ciqa.unam.mx; jrgonzalez@pmip.unam.mx

KEY WORDS: Land cover database, Updating, Uncertainty, Image segmentation, Visual interpretation

ABSTRACT:

This article presents a hybrid method that combines image segmentation, GIS analysis, and visual interpretation in order to detect discrepancies between an existing land use/cover map and satellite images, and assess land use/cover changes. It was applied to the elaboration of a multivariate land use/cover database of the State of Michoacán, Mexico using SPOT and Landsat imagery. The method was first applied to improve the resolution of an existing 1:250,000 land use/cover map produced through the visual interpretation of 2007 SPOT images. A segmentation of the 2007 SPOT images was carried out to create spectrally homogeneous objects with a minimum area of two hectares. Through an overlay operation with the outdated map, each segment receives the “majority” category from the map. Furthermore, spectral indices of the SPOT image were calculated for each band and each segment; therefore, each segment was characterized from the images (spectral indices) and the map (class label). In order to detect uncertain areas which present discrepancy between spectral response and class label, a multivariate trimming, which consists in truncating a distribution from its least likely values, was applied. The segments that behave like outliers were detected and labeled as “uncertain” and a probable alternative category was determined by means of a digital classification using a decision tree classification algorithm. Then, the segments were visually inspected in the SPOT image and high resolution imagery to assign a final category. The same procedure was applied to update the map to 2014 using Landsat imagery. As a final step, an accuracy assessment was carried out using verification sites selected from a stratified random sampling and visually interpreted using high resolution imagery and ground truth.

1. INTRODUCTION

Due to its latitudinal position, its topography, climate and geology diversity, Mexico presents a high biodiversity. In particular, there are many types of vegetation, including temperate and tropical forests (Toledo, 1994). Besides, Mexico presents high rates of land use/cover change (LUCC) including important processes of deforestation and forest degradation (Mas et al., 2004, Velázquez et al., 2010). LUCC results in complex mosaics of land use and forest patches. For these reasons, mapping land use/cover is not an easy task.

As a result of this large diversity, land use/cover (LUC) map's classification schemes are complex. For instance, LUC maps from the National Institute of Statistics and Geography (INEGI), the Mexican mapping agency, have 57 different types of vegetation and 20 types of land use (INEGI, 2011). Different types of covers present similar spectral response and the same type of cover can present different spectral responses depending on the phenology, the conservation state and the density of vegetation. Due to LUCC, frequent updating and the elaboration of multivariate cartographic databases are required to assess change. Different approaches can be used to elaborate and update existing LUC maps. On the one hand, visual interpretation, often computer-aided, has been widely used to elaborate LUC cartography including cartography over large areas such as Europe (Feranec et al., 2007), Africa (Disperati and Viridis, 2015) and, China (Zhang et al., 2014). It enables map producers to include many classification criteria such as texture, shape, pattern, size of object and proximity between object, interpreter's knowledge, etc. and has been shown to achieve more accurate results than spectral-based digital approaches (Sader et al., 1990, Mas and Ramirez, 1996,

Palacio Prieto and González, 1994, van den Broek et al., 2004). When visual interpretation is used to update existing cartography, LUCC are extracted accurately (Zhang et al., 2014, Disperati and Viridis, 2015). On the other hand fully automatic processing approaches based on digital classification of spectral data eventually combined with ancillary information (Gebhardt et al., 2014) permit a faster analysis but they present often more classification errors than visual interpretation.

This study aims at developing a hybrid method (semi-automatic processing and computer-aided visual interpretation) which combines image segmentation, GIS analysis, and visual interpretation to elaborate a multivariate cartographic database from remote sensing data, to produce an updated cartography and assess LUCC (deforestation).

2. STUDY AREA AND MATERIALS

The State of Michoacán (Fig. 1), which encompasses about 60,000 square kilometers, is one of the most diverse State of Mexico with different types of tropical and temperate forests. It also presents important processes of land use/cover change (Bocco et al., 2001).

We used 32 SPOT 5 images of 2007 along with an outdated LUC cartography at scale 1:100,000 obtained by visual interpretation of a Landsat image dated 2003 (Figure 3). Image processing was carried out using the spatial modeling platform DINAMICA EGO (Soares-Filho et al., 2002), BIS Cloud (Berkeley Image Segmentation on the cloud) (Berkeley Image Segmentation, 2015) and R (R Core Team, 2013).



Figure 1: State of Michoacán, Mexico. The red square is the area represented in the subsequent figures

3. METHODS

Method was modified from the approach proposed by Radoux & Defourny (2010) and Radoux et al., (2014) to update cartography and/or detect changes. This approach consists of using an existing but outdated LUC map to classify a recent image. In this case, a segmentation of the 2007 SPOT (Système Probatoire d'Observation de la Terre) images was carried out using a region growing algorithm, creating spectrally homogeneous objects with a minimum area of two hectares. Then the segmented image and the outdated map were overlaid in order to assign a label (category) at each segment: Each segment was labeled based on the class from visual interpretation-based map covering the largest proportion of its area. The spectral response of each segmented was also computed. Therefore each segment was associated to a category (from the map) and spectral indices (mean and standard deviation of digital number values for each spectral band). Each category was then defined by a density function (figure 2), which describes the relative likelihood for a pixel with a given spectral value to belong to a particular LUC category. Segments whose label from the map did not match the "typical" spectral response of their category were identified as uncertain segments (outliers) by trimming (removal of extreme "outliers" values). These segments were classified using spectral response by means of the tree C5 classifier as a help for the visual interpreter. However, the final category was assigned by visual interpretation of a false color composite of the SPOT images. Finally, an accuracy assessment was carried out using a stratified random sampling and panchromatic fused SPOT images following the method proposed by Card (1982).

The same procedure was applied to update the map to 2014 using Landsat imagery. In the update of 2007 map to 2014, it can be reasonably assumed that many discrepancies were effective land use/cover change. As a final step, an accuracy assessment was carried out using verification sites selected from a stratified random sampling and visually interpreted using high resolution

imagery and ground truth.

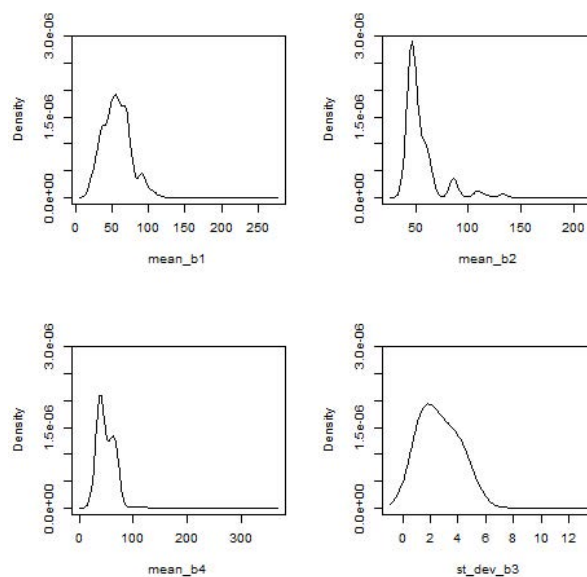


Figure 2: Density function per analysed band.

4. RESULTS

A classification scheme of 25 LUC categories including 15 forest categories was defined (Table 1) In this 1:100,000 2003 LUC map, objects representation depends on cartographic rules as minimum cartographic area and polygon generalization (Figure 3). The segmentation of the 2007 SPOT images created spectrally homogeneous objects with a minimum area of two hectares (Figure 4). The segmented image was therefore spatially more detailed than the 2003 map obtained through visual interpretation (Figure 5).

The accuracy assessment from the 2007 updated segmentation indicated an overall accuracy of 79.5 % \pm 3.3 and user and producer accuracies between 50 and 100% (Table 2 in Appendix). The 2007 map was used to update the information using 2014 Landsat imagery (Figures 6 and 7). In summary, this method permits to update maps from different imagery inputs.

5. DISCUSSION AND CONCLUSION

Visual interpretation is widely used to update existing cartography. According to Zhang et al. (2014) processes of LUCC are extracted more accurately by visual interpretation than by digital classification. However, in case of the elaboration of new cartography (without existing previous map) or when the outdated existing map is represented at a coarser scale, visual delimitation of polygons, a time consuming task, has to be carried out. In these cases, digital image segmentation is a way to capture the limits between the different LUC types. In addition, hybrid approach allowed optimizing the work of the interpreter by identifying areas with likely errors or changes. Spectral classification is used but the "last word" is given to the visual interpretation because, due to spectral confusion, we considered expert opinion more accurate.

The obtained accuracy is higher than accuracy commonly obtained by digital approaches in Mexico. This method will be used

LUC category	code
Cropland (Irrigated)	1
Cropland (rainfed)	2
Cropland (perennial)	3
Human settlements	4
Grassland	5
Oak forest (primary)	6
Oak forest (secondary)	7
Oyamel forest (primary)	8
Oyamel forest (secondary)	9
Pine forest (primary)	10
Pine forest (secondary)	11
Mountain cloud forest	12
Mountain cloud forest (secondary)	13
Pine-oak forest (primary)	14
Pine-oak forest (secondary)	15
Scrubland	16
Scrubland (secondary)	17
Tropical deciduous forest	18
Tropical deciduous forest (secondary)	19
Medium deciduous forest	20
Medium deciduous forest (secondary)	21
Water body	22
Mangrove	23
Popal-tular (Wetland vegetation)	24
Areas without apparent vegetation	25

Table 1: Classification scheme.

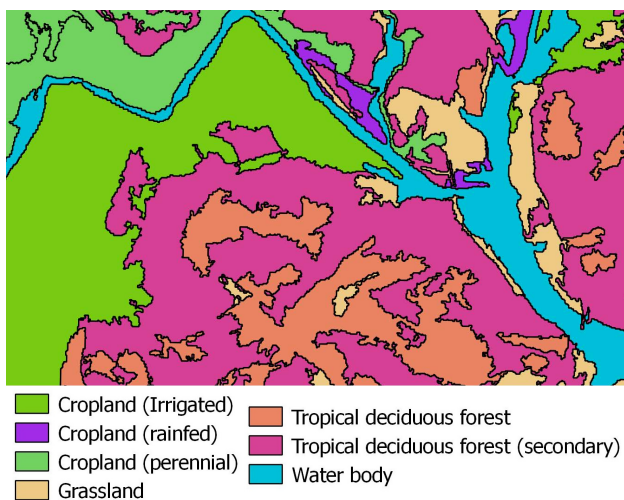


Figure 3: 2003 LUC map.

for the elaboration of a whole time series to monitor LUCC in Michoacan. Further work is necessary to deeply evaluate classification errors. the LUC map will be evaluated by interpreters from INEGI and verification sites used in the first accuracy assessment will be interpreted again by a second interpreter and, eventually verified in field in case of incongruence between the first and second interpretations. Finally, information from field plots from the National Forest Inventory will be integrated in the database.

ACKNOWLEDGEMENTS

This study was supported by the project "Monitoreo de la cubierta del suelo y la deforestación en el Estado de Michoacán: un análisis de cambios mediante sensores remotos a escala regional" (Fondo Mixto Conacyt - Gobierno del Estado de Michoacán, grant number 192429). We would like to thank Luis

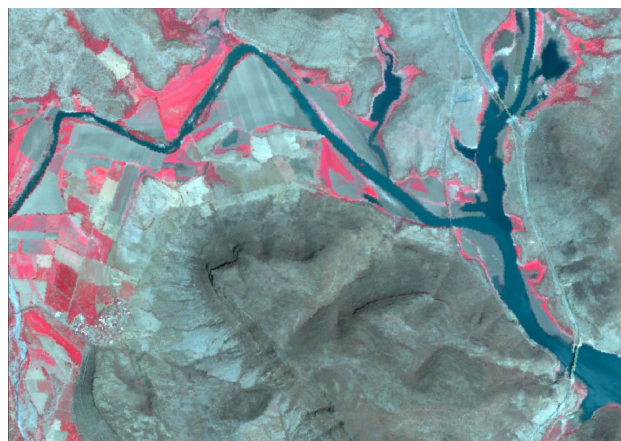


Figure 4: False color composite of the SPOT 5 Image, 2007. © CNES.

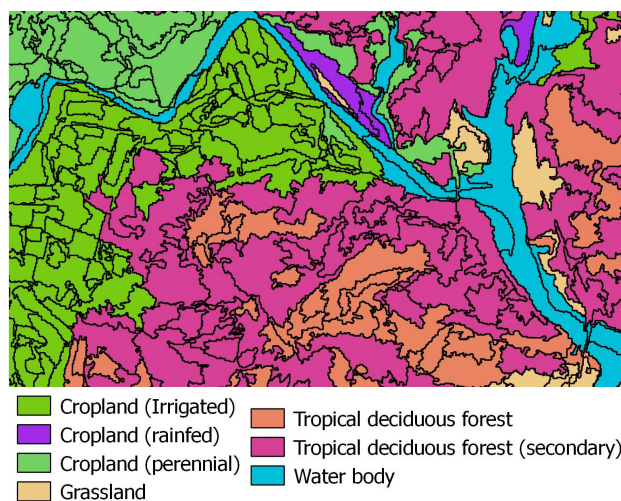


Figure 5: SPOT 5 based updated segmentation (2007).

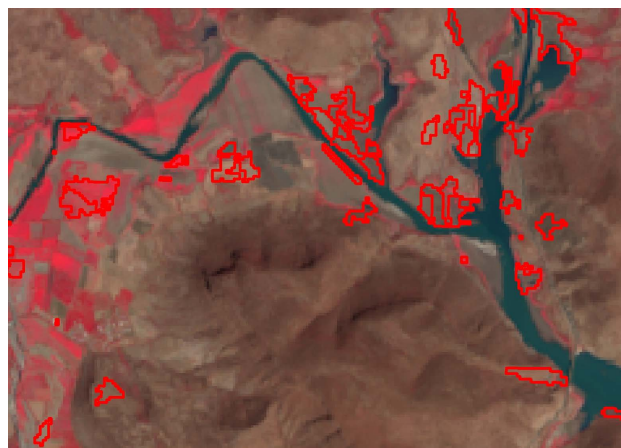


Figure 6: False color composite of the Landsat 8 Image, 2014. © USGS/NASA Landsat. Red objects were the "uncertain" segments.

Giovanni Ramírez Sánchez, González Rodríguez Marisol, Evelyn Herrera-Flores, Jairo López-Sánchez, Andrés Piña Garduño and Richard Lemoine Rodríguez for their contributions. SPOT images were obtained through the ERMEXS-UNAM agreement.

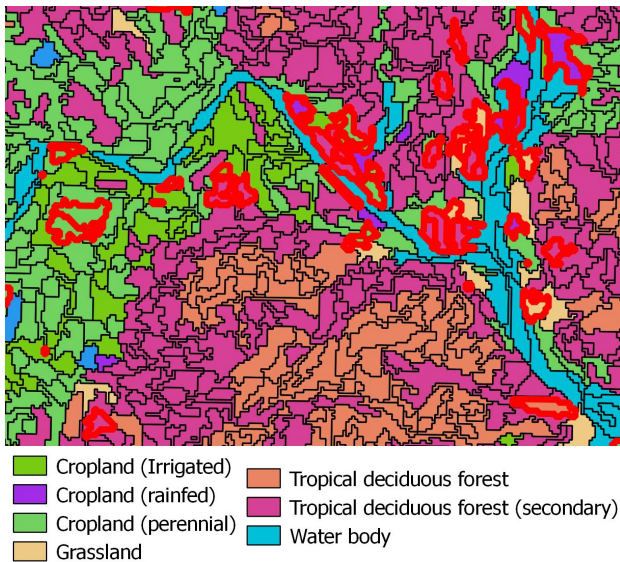


Figure 7: Landsat 8 based updated segmentation (2014) Probable classification by C5 algorithm. Red objects were the “uncertain” segments before visual interpretation.

REFERENCES

- Berkeley Image Segmentation, 2015.
- Bocco, G., Méndoza, M. and Masera, O. R., 2001. La dinámica del cambio del uso del suelo en Michoacán. Una propuesta metodológica para el estudio de los procesos de deforestación. *Investigaciones Geográficas* 44, pp. 18–38.
- Card, D. H., 1982. Using known map category marginal frequencies to improve estimates of thematic map accuracy.
- Disperati, L. and Virdis, S. G. P., 2015. Assessment of land-use and land-cover changes from 1965 to 2014 in tam giang-cau hai lagoon, central vietnam. *Applied Geography* 58(0), pp. 48 – 64.
- Feranec, J., Hazeu, G., Christensen, S. and Jaffrain, G., 2007. Corine land cover change detection in europe (case studies of the netherlands and slovakia). *Land Use Policy* 24(1), pp. 234 – 247.
- Gebhardt, S., Wehrmann, T., Ruiz, M. A. M., Maeda, P., Bishop, J., Schramm, M., Kopeinig, R., Cartus, O., Kelldorfer, J., Ressler, R. et al., 2014. Mad-mex: Automatic wall-to-wall land cover monitoring for the mexican reddy-mrv program using all landsat data. *Remote Sensing* 6(5), pp. 3923–3943.
- INEGI, 2011. Metodología para la Generación y Actualización de la Información de Uso de Suelo y Vegetación, escala 1:250,000, Serie IV. Technical report.
- Mas, J. and Ramirez, I., 1996. Comparison of land use classifications obtained by visual interpretation and digital processing. *ITC Journal* (3), pp. 278–283.
- Mas, J.-F., Velázquez, A., Díaz-Gallegos, J., Mayorga-Saucedo, A., Alcántara, C., Bocco, G., Castro, R., Fernández, T. and Pérez-Vega, A., 2004. Assessing land use/cover changes: A nationwide multivariate spatial database for Mexico. *International Journal of Applied Earth Observation and Geoinformation* 5(4), pp. 249–261.
- Palacio Prieto, J. and González, L. L., 1994. Clasificación espectral automática vs. clasificación visual: un ejemplo al sur de la ciudad de México. *Investigaciones Geográficas Boletín* 29, pp. 25–40.
- R Core Team, 2013. R: A Language and Environment for Statistical Computing. R Foundation for Statistical Computing, Vienna, Austria.
- Radoux, J. and Defourny, P., 2010. Automated image-to-map discrepancy detection using iterative trimming. *Photogrammetric Engineering & Remote Sensing* 76(2), pp. 173–181.
- Radoux, J., Lamarche, C., Van Bogaert, E., Bontemps, S., Brockmann, C. and Defourny, P., 2014. Automated training sample extraction for global land cover mapping. *Remote Sensing* 6(5), pp. 3965–3987.
- Sader, S. A., Stone, T. A. and Joyce, A. T., 1990. Remote sensing of tropical forests: an overview of research and applications using non-photographic sensors. *Photogrammetric Engineering and Remote Sensing* 56(10), pp. 1343–1351.
- Soares-Filho, B. S., Cerqueira, G. C. and Pennachin, C. L., 2002. Dinamica—a stochastic cellular automata model designed to simulate the landscape dynamics in an amazonian colonization frontier. *Ecological Modelling* 154(3), pp. 217–235.
- Toledo, V. M., 1994. La biodiversidad de México. *Ciencias* 34, pp. 43–57.
- van den Broek, A. C., Smith, A. J. E. and Toet, A., 2004. Land use classification of polarimetric sar data by visual interpretation and comparison with an automatic procedure. *International Journal of Remote Sensing* 25(18), pp. 3573–3591.
- Velázquez, A., Mas, J.-F., Bocco, G. and Palacio-Prieto, J. L., 2010. Mapping land cover changes in Mexico, 1976-2000 and applications for guiding environmental management policy. *Singapore Journal of Tropical Geography* 31(2), pp. 152–162.
- Zhang, Z., Wang, X., Zhao, X., Liu, B., Yi, L., Zuo, L., Wen, Q., Liu, F., Xu, J. and Hu, S., 2014. A 2010 update of national land use/cover database of china at 1:100000 scale using medium spatial resolution satellite images. *Remote Sensing of Environment* 149(0), pp. 142 – 154.

APPENDIX

LUC class	code	User's accuracy %	Confidence interval %	Product's accuracy %	Confidence interval%
Cropland (Irrigated)	1	47.83	20.42	70.3	17.39
Cropland (rainfed)	2	86.84	10.75	62.7	8.19
Cropland (perennial)	3	84.00	10.16	93.7	6.08
Human settlements	4	95.83	5.65	99.6	0.72
Grassland	5	85.42	9.98	74.0	8.02
Oak forest (primary)	6	55.10	13.93	86.9	16.47
Oak forest (secondary)	7	58.00	13.68	75.4	13.24
Oyamel forest (primary)	8	94.59	7.29	100.0	0.00
Oyamel forest (secondary)	9	90.00	18.59	72.0	39.21
Pine forest (primary)	10	86.27	9.44	88.3	17.02
Pine forest (secondary)	11	81.25	11.04	77.3	12.62
Mountain cloud forest	12	50.00	17.89	100.0	0.00
Mountain cloud forest (secondary)	13	40.00	42.94	0.9	1.14
Pine-oak forest (primary)	14	85.71	9.80	88.0	7.98
Pine-oak forest (secondary)	15	77.08	11.89	78.2	10.46
Scrubland	16	93.88	6.71	92.3	9.98
Scrubland (secondary)	17	83.33	13.34	66.9	19.88
Tropical deciduous forest	18	80.00	11.09	86.8	9.23
Tropical deciduous forest (secondary)	19	89.80	8.48	81.2	7.33
Medium deciduous forest	20	70.00	14.20	96.5	6.56
Medium deciduous forest (secondary)	21	70.73	13.93	85.5	10.47
Water body	22	100.00	0.00	99.6	0.70
Mangrove	23	65.00	20.90	100.0	0.00
Popal-tular (Wetland vegetation)	24	93.10	9.22	100.0	0.00
Areas without apparent vegetation	25	93.33	8.93	100.0	0.00

Table 2: User's and Product's accuracies along with their confidence interval